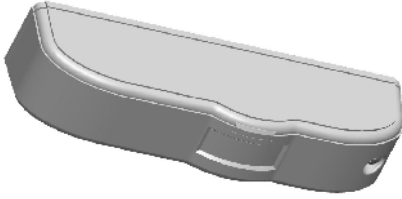


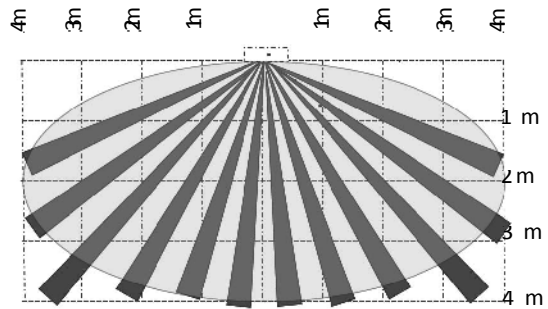
GATEWATCH

Curtain double technology



Frontal view

Coverage Area



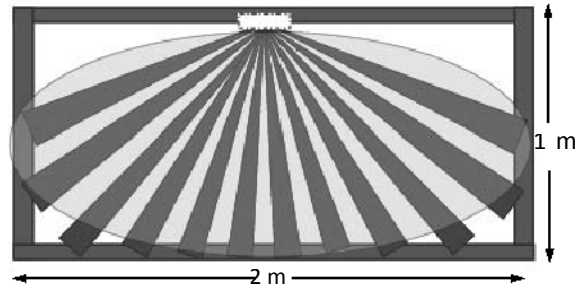
GATEWATCH is a double technology curtain with a view of 140° by 15° . Ideal to protect passages such as doors, windows, covered terraces, corridors and glass walls.

Installation manual

Technical features

- Installation height up to 4 m
- Adjustable range
- Detection sensibility detection
- Microwave micro-strip 10.525 GHz
- Anti-flicker circuit
- Remote WALK TEST
- Sealed optics
- Coverage $140^\circ \times 15^\circ$ by 4 m
- End of line resistors (DEOL)
- 13 values selectable on board

Es: coverage window 2m x 1m

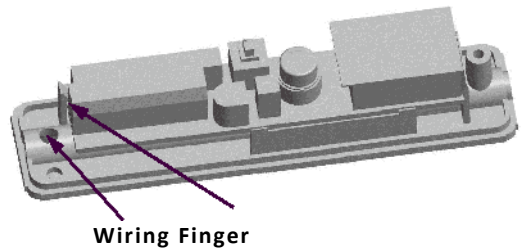


Remove the front cover, remove the board pressing on the finger slot, remove the predrilling hole at the bottom and fix it with the screws. Run the cable through the designated hole and ensure the cable on the terminal block. In order to increase the RFI immunity use a ground shielded cable with the shield connected to ground only on the central unit side. Power the GATEWATCH, which will get in selftest for 60 seconds. Thereafter proceed to adjustments..

Installation guide

GATEWATCH has been designed to protect passages such as doors, windows, covered terraces, corridors and glass walls. It must be placed horizontally in the middle of the top part, in the area to be protected with the lens facing down. It is not allowed to point the sensor upwards.

Its width coverage is twice as wide as the installation height. For example: When placed in the middle of a 1 m high window, its coverage in width will be for 2 m, see picture.



When powered the GATEWATCH switches itself to LED ON for forty minutes despite the settings, to allow the coverage test.

Terminal wiring

+12V- Power input

EOL Common output for End Of Line

TAMPER NC contact, open if cover removed

ALARM NC relay, open with alarm

DEOL Double End of Line Output

TRIMMER microwave range adjustment, turning clockwise increases range from 0.5 m to 4m

LED Jumper open LED display active, Jumper close LED display deactivated

SENS Jumper open low sensitivity selected. Jumper close high sensitivity selected.

REGULATION

If the GATEWATCH is installed to protect a passage with obstacles, such as windows, doors or glass walls where one cannot run into, leave the JUMPER SENS open (Low sensitivity), otherwise if it to protect an open gate close the JUMPER SENS (High sensitivity). Regolare la portata di microonda con il trimmer al minimo, a led spenti passare con il corpo sotto il varco da proteggere e verificare la rilevazione di microonda attraverso l'accensione del led verde, qualora non si abbia l'accensione del led verde ruotare il trimmer in senso orario e ripetere la prova

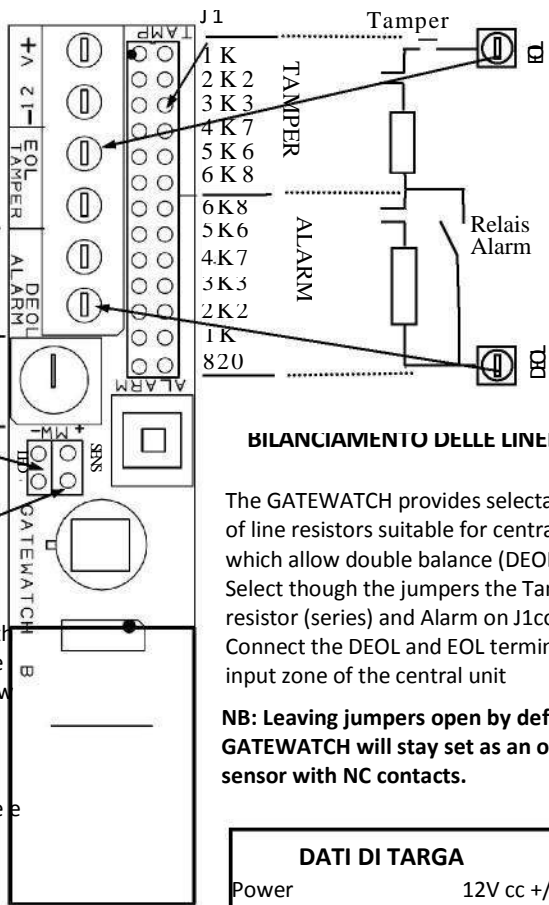
N.B The microwave range must be regulated to the minimum necessary

Mount the front cover and fix it with the screw, verify The coverage area by lighting of the leds

RED LED Infrared detetion
GREEN Led Microwave detection
RED + GREEN Alarm

LED ON Jumper LED open led display enabled
LED OFF Jumper LED close, led display disabled

In order to enable the display in LED OFF mode, turn the power off and on again. The device will enable the displaying for forty minutes



BILANCIAMENTO DELLE LINEE

The GATEWATCH provides selectable end of line resistors suitable for central units which allow double balance (DEOL). Select though the jumpers the Tamper resistor (series) and Alarm on J1connector. Connect the DEOL and EOL terminal to the input zone of the central unit

NB: Leaving jumpers open by default the GATEWATCH will stay set as an ordinary sensor with NC contacts.

DATI DI TARGA

Power 12V cc +/-30%
Consumption Max 40 mA
Microwave strip 10.525 GHz 8 dBm
Alarm Period 3 sec
RFI Immunity 0,1/500 MHZ 3 V/m
Operating Temperature -5/+55° C



RTTE Compliance statement: Hereby, De Tech Srl declares that the equipment is in compliance with the essential requirements and other relevant provisions of Directive 1999/5/EC

WARRANTY

The product is gaurateed 5 years against defects manufacturing and malfunctions.

CE clarification

AT	BE	CY	DK	DK
EL	FR	GR	GR	GR
HU	IE	IT	LV	LT
MT	MT	NL	PL	PT
SE	SL	ES	SK	SI
TR	UK			

