

## SmartLoop/INOUT

### Input and output expansion card

SMARTLOOP



#### GENERAL DESCRIPTION

SmartLoop/INOUT expansion card provide 6 terminals. Each terminal can be set up to operate as either a supervised output NAC (1A max.); supervised input or input line (zone) for conventional detectors. The output trigger signals and the actions generated by the activation of the inputs are fully programmable.

#### MAIN FEATURES

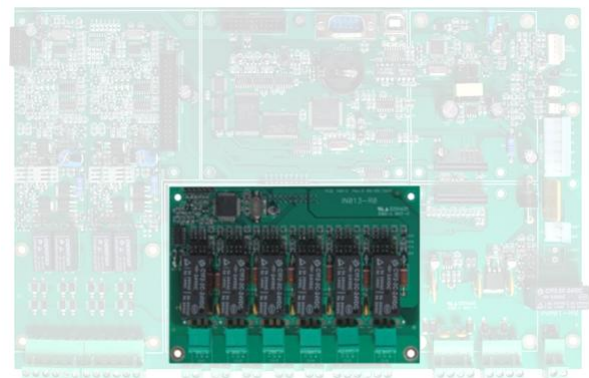
- Suitable for all SmartLoop models
- Add 6 lines to the panel, each line can be configured independently
- MAX 1 card per panel

#### ORDERING CODES

SmartLoop/INOUT	6 I/O expansion card
-----------------	----------------------

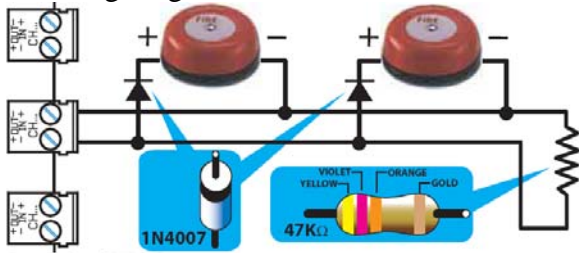
#### INSTALLATION

The card is supplied with metal spacers to be screwed on the panel main board. The card is plugged in the main board connector

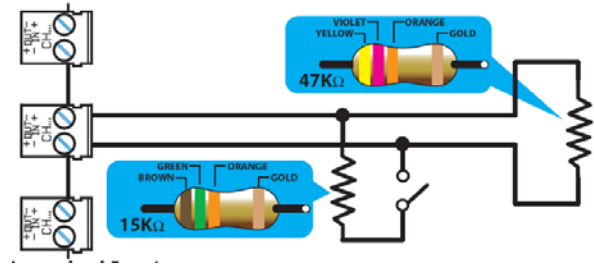


## WIRINGS

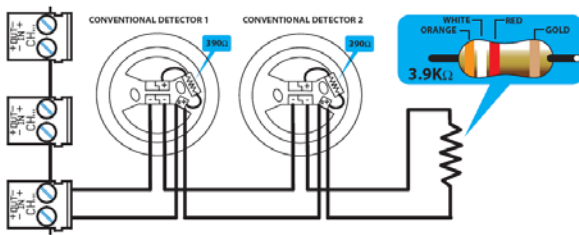
According to selected line configuration the wiring must be done according one of the following diagrams:



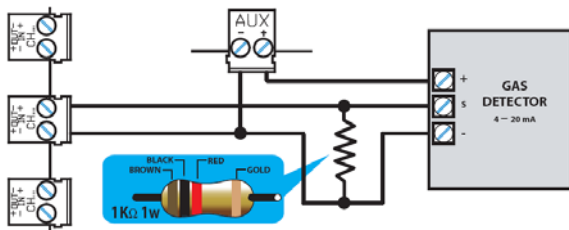
**SUPERVISED OUTPUT**



**SUPERVISED INPUT**



**CONVENTIONAL LINE**



**4-20 mA GAS DETECTOR**



**INIM ELECTRONICS s.r.l.**

Via Fosso Antico – Loc. Centobuchi  
63033 MONTEPRANDONE  
(AP) ITALY  
Tel. +39 0735 705007  
Fax +39 0735 704912  
[www.inim.biz](http://www.inim.biz)

**DISTRIBUTOR:**